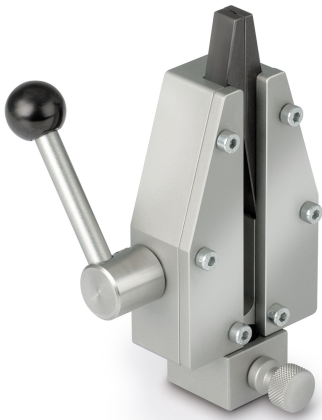


# KERN AD 9080

**KERN**

Wedge tension clamp 10 kN, steel



## Category

Brand	Sauter
Product category	Clamp
Product group	Wedge Clamp

## Construction

Dimensions completely mounted (W×D×H)	134×60×40 mm
Material	steel
Mounting - force dissipation	Threaded hole M6 External thread M12
Tensile/compressive force [Max]	10 kN
Maximum clamp width	10 mm
Clamping width	8 mm

## Environmental conditions

Storage temperature [Min]	-10 °C
Storage temperature [Max]	40 °C

## Packing & Shipping

Readability force [d] (N)	14 d
Dimensions packaging (W×D×H)	134×60×40 mm
Net weight	3 kg
Shipping method	Parcel service
Net weight approx.	3,0 kg
Gross weight approx.	3,0 kg
Shipping weight	3 kg

## Pictograms