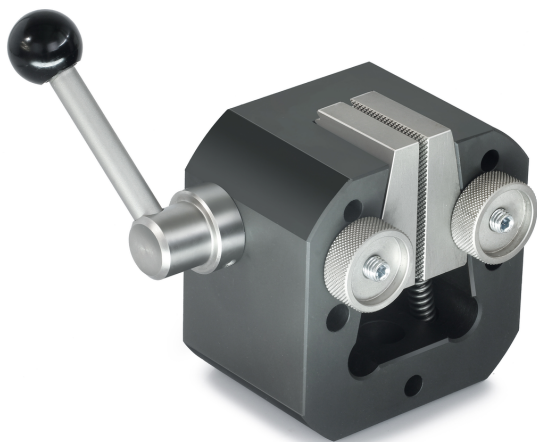


KERN AD 9096

KERN

Wedge tension clamp for tensile force tests



Category

Brand	Sauter
Product category	Clamp
Product group	Wedge Clamp

Construction

Dimensions completely mounted (W×D×H)	170×108×96 mm
Material	steel
Mounting - force dissipation	External thread M12 External thread M18 × 1,5 External thread M18
Tensile/compressive force [Max]	50 kN
Maximum clamp width	50 mm
Clamping width	13 mm

Environmental conditions

Storage temperature [Min]	-10 °C
Storage temperature [Max]	40 °C

Packing & Shipping

Readability force [d] (N)	14 d
Dimensions packaging (W×D×H)	170×108×96 mm
Net weight	3,8 kg
Shipping method	Parcel service
Net weight approx.	3,8 kg
Gross weight approx.	3,8 kg
Shipping weight	3,8 kg

Pictograms